



# Evaluating Systems Change Using the Most Significant Change Method

MICHIGAN ASSOCIATION OF EVALUATORS  
MAY 9, 2019

Miles McNall  
Trevor Strzyzkowski  
Danielle Haggerty

**MICHIGAN STATE**  
UNIVERSITY

University Outreach  
and Engagement

# Project AWARE

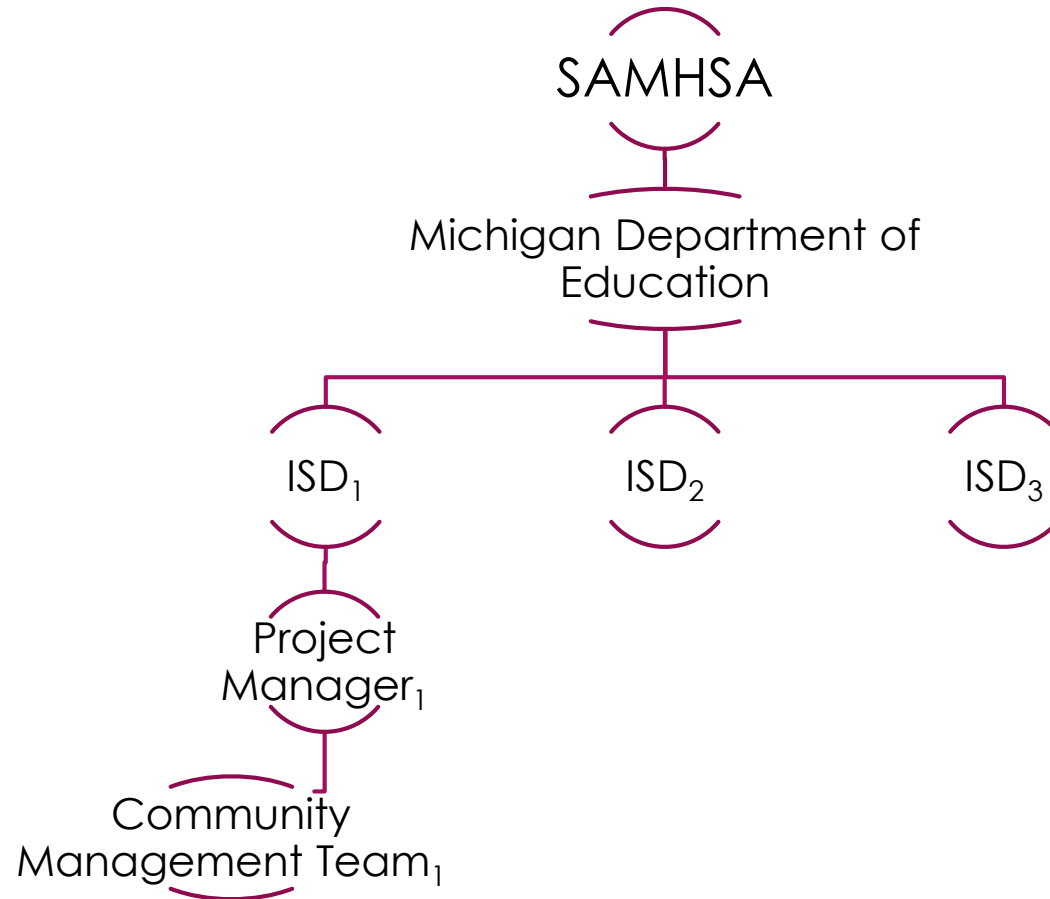
Advancing Wellness And Resiliency in Education



- ▶ Two key components:
  - ▶ **Youth Mental Health First Aid** training
  - ▶ Connecting children, youth, and families to appropriate mental health services through the schools and communities (**systems change**)

# Project AWARE

Advancing Wellness And Resiliency in Education



# Why We Chose Most Significant Change

- ▶ Casts a wider net than predetermined measures
- ▶ Captures both expected and unexpected outcomes
- ▶ Retrospective method for gathering outcomes through storytelling

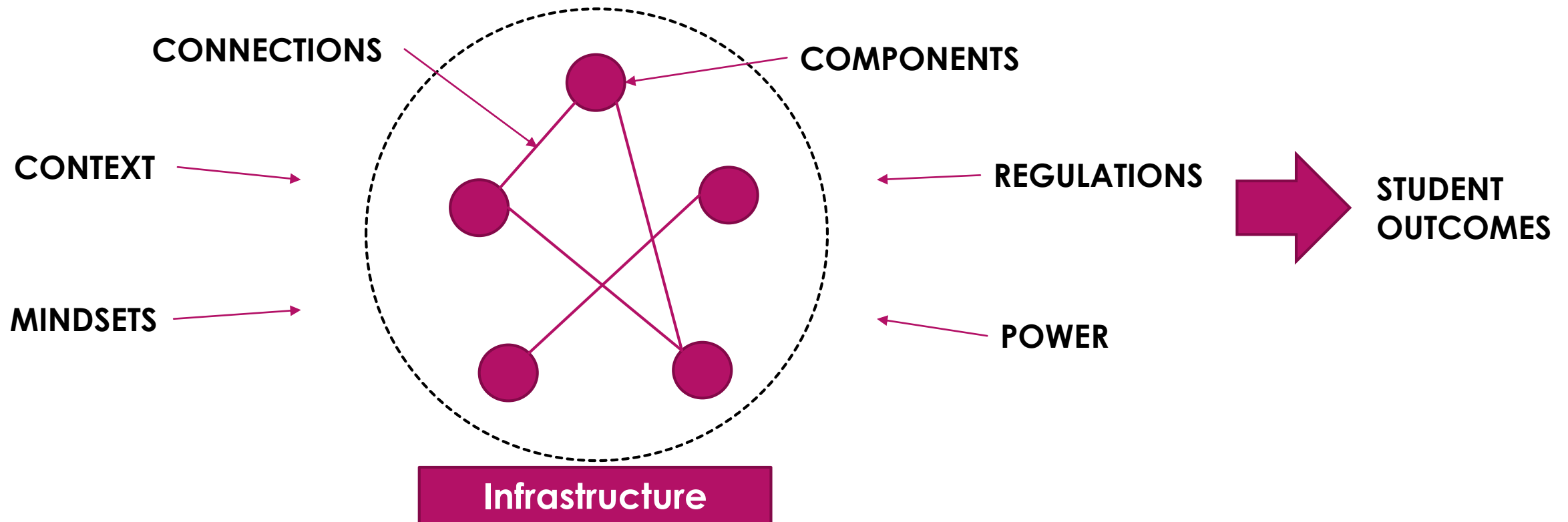
Dart, J., & Davies, R. (2003). A dialogical, story-based evaluation tool: The most significant change technique. *American Journal of Evaluation*, 24(2), 137-155.

## Step 2.

### Define Domains of Systems Change

- ▶ Needed a framework to capture broad systems changes
- ▶ Framework informed by **Coffman** and **Foster-Fishman**
- ▶ Defined **systems change indicators** with stakeholders
  - ▶ 7 domains of systems change
  - ▶ 44 indicators of systems change

# Systems Change Framework



# Step 4.

## Prepare for Data Collection

- ▶ Most Significant Change events were scheduled at each ISD
- ▶ Project managers selected stakeholders to participate
  - ▶ Core groups who attended Community Management Team meetings
- ▶ Participants included representatives from:
  - ▶ ISDs
  - ▶ Schools
  - ▶ Community agencies

# Step 4.

## Develop Five Focus Questions

Questions sent two weeks prior to each event:

1. What significant change has there been in your districts/ISD/communities as a result of **Project AWARE**?
2. Why is this change significant?
3. How do you know this change has occurred?
4. How did **Project AWARE** contribute to this change?
5. What else has happened as a result of this change?



## Step 4.

### Hold Event to Collect Significant Change Stories

- ▶ 8:00-8:30 am Pre-meeting coffee and find your table
- ▶ 8:30-8:45 am Introduction to program
- ▶ **8:45-9:15 am Individual writing time**
- ▶ 9:15-9:45 am Group time to share and select
- ▶ 9:45-10:00 am Break
- ▶ 10:00-11:00 am Presentation by each group
- ▶ 11:00-11:30 am Whole group discussion and wrap up

# Step 5.

## Select Most Significant Stories

- ▶ 8:00-8:30 am Pre-meeting coffee and find your table
- ▶ 8:30-8:45 am Introduction to program
- ▶ 8:45-9:15 am Individual writing time
- ▶ **9:15-9:45 am** **Group time to share and select**
- ▶ 9:45-10:00 am Break
- ▶ 10:00-11:00 am Presentation by each group
- ▶ 11:00-11:30 am Whole group discussion and wrap up

# Step 6.

## Share Most Significant Change Stories

- ▶ 8:00-8:30 am Pre-meeting coffee and find your table
- ▶ 8:30-8:45 am Introduction to program
- ▶ 8:45-9:15 am Individual writing time
- ▶ 9:15-9:45 am Group time to share and select
- ▶ 9:45-10:00 am Break
- ▶ **10:00-11:00 am** **Presentation by each group**
- ▶ 11:00-11:30 am Whole group discussion and wrap up

# Step 7.

## Quantify Stories: Content Coding

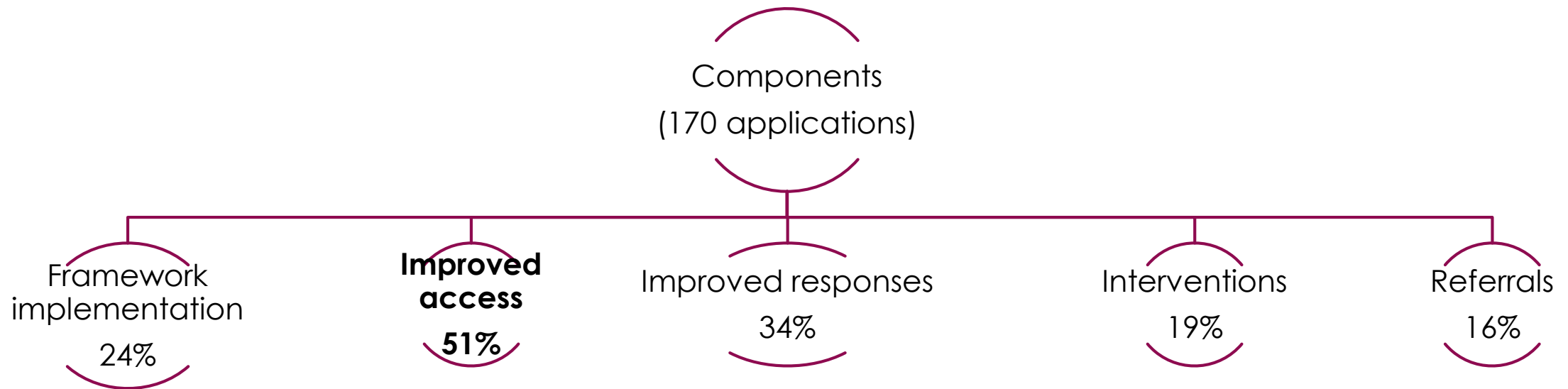
- ▶ Transcribed and quality checked
- ▶ Imported to Dedoose
- ▶ Thematic analysis using a consensus approach
  - ▶ Two coders independently read and applied codes
  - ▶ Discussed disagreements, revised iteratively
  - ▶ Lead evaluator settled discrepancies

# Results: Indications of Systems Change

	Total applications	Applications per story
<b>Components</b>	<b>170</b>	<b>2.33</b>
Connections	137	1.88
Infrastructure	131	1.79
Mindsets	107	1.47
Context	50	0.68
Power	18	0.25
Regulations	14	0.19

# Results: Components

## Presence and Characteristics of Programs and Supports



***“Students and families have access to services, and someone who can help them navigate an often times confusing system.”***

*Community Agency on Improved Access*

# Step 8.

## Verify Results

- ▶ Compared results with predicted results
  - ▶ Systems change indicators
  - ▶ Theory of Change
- ▶ Checked for consistency across multiple data sources
- ▶ Member checking
  - ▶ Project managers
  - ▶ Local representatives

# Conclusion

Coupled with our systems change framework, the **Most Significant Change** method was an effective and manageable approach to capture both expected and unexpected changes in youth mental health systems.



# Contact Information

## **Miles McNall, Ph. D.**

Director of the Community Evaluation and Research Collaborative (CERC)

Assistant Professor, MSU Program Evaluation

Adjunct Professor, MSU Department of Human Development and Family Studies

**Email:** [mcnall@msu.edu](mailto:mcnall@msu.edu)